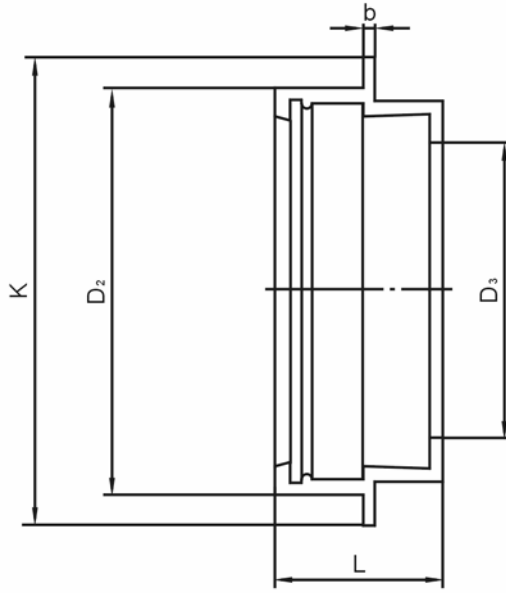




●人孔連接管



單位：mm

標稱管徑	各部尺度					參考質量 (kg)
	D <sub>2</sub>	D <sub>3</sub>	b	K	L	
150	207.4	147.0	7.8	250	96	5.5
200	261.9	198.0	8.4	310	113	8.7
250	314.7	249.6	9.0	360	123	11.8
300	367.1	300.8	9.6	415	125	14.7
350	430.0	349.0	10.2	470	140	20.3
400	482.8	398.6	10.8	530	141	24.8
450	535.2	448.8	11.4	585	141	29.1
500	587.6	499.0	12.0	635	147	34.3
600	692.8	598.8	13.2	740	153	45.6
700	818.8	697.0	14.4	865	169	77.4
800	924.2	797.0	15.6	970	176	96.9
900	1029.6	897.0	16.8	1075	192	120.9
1000	1140.0	996.0	18.0	1190	203	156.1
1100	1245.4	1096.0	19.2	1295	219	188.3
1200	1349.8	1195.0	20.4	1400	235	225.0